

Smoke Alarms

A fire safety inspection checklist

SFMQ.12/2016

Smoke alarms are a key part of a home fire escape plan. When there is a fire, smoke spreads fast. Working smoke alarms give you early warning so you can get outside quickly.

Safety Tips

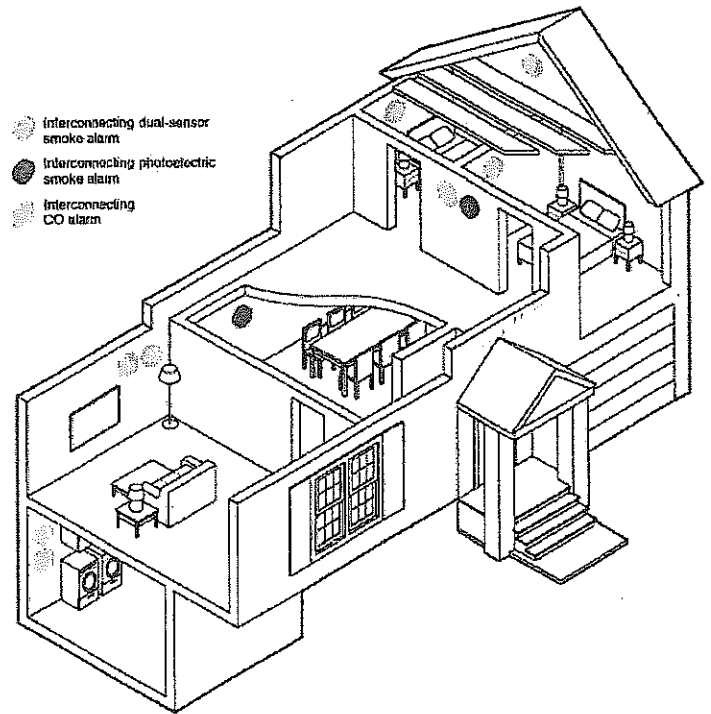
- A closed door may slow the spread of smoke, heat and fire. Install smoke alarms in every sleeping room and outside each separate sleeping area. Install alarms on every level of the home. Install alarms in the basement.
- Large homes may need extra smoke alarms.
- It is best to use interconnected smoke alarms. When one smoke alarm sounds they all sound.
- Test all smoke alarms at least once a month. Press the test button to be sure the alarm is working.



For more information:
 State Fire Marshal's Office
 P.O. Box 149221 (Mail Code 112-FM)
 Austin, Texas 78714-9221
 512-676-6800 FAX: 512-490-1063
 fire.marshall@tdi.texas.gov
 www.tdi.texas.gov/fire

- There are two kinds of alarms. Ionization smoke alarms are quicker to warn about flaming fires. Photoelectric alarms are quicker to warn about smoldering fires. It is best to use of both types of alarms in the home.
- A smoke alarm should be on the ceiling or high on a wall. Keep smoke alarms away from the kitchen to reduce false alarms. They should be at least 10 feet (3 meters) from the stove.
- People who are hard-of-hearing or deaf can use special alarms. These alarms have strobe lights and bed shakers.
- Replace all smoke alarms when they are 10 years old.

WHERE TO PLACE ALARMS TO GET THE BEST COVERAGE OF YOUR LIVING SPACE.



State Fire Marshal's Office
 Prevention • Education • Protection

**PUT SMOKE ALARMS IN YOUR HOME
 TO KEEP YOUR FAMILY SAFE**